


NO. 61830039.293

THREE PHASE TRANSFORMER **HOWARD INDUSTRIES** LAUREL MS 39440 USA

READ INSTRUCTION HI 105 BEFORE OPERATING

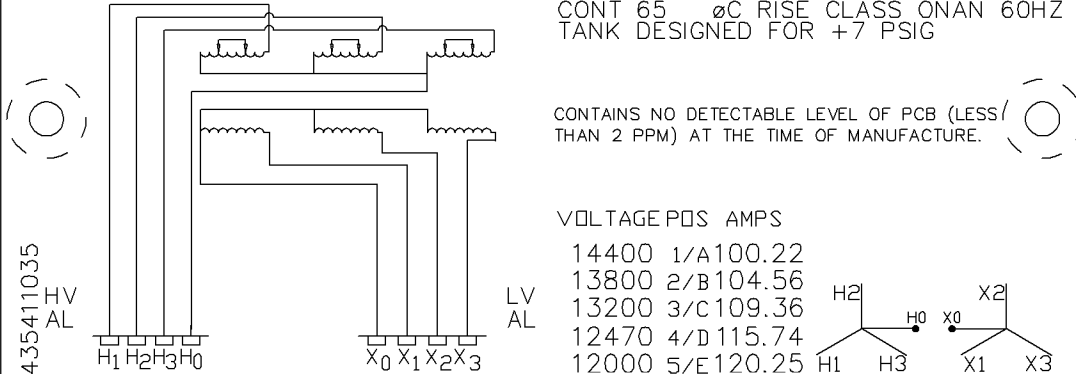
KVA 2500
 HV 13200GRDY/7620 BIL HV 95 LV 30kV  %IMP
 WT TANK 3434 c&c 5789 OIL TYPE II 4223 LBS TOTAL 13446 LBS
 LB 563 GAL

CONT 65 °C RISE CLASS ONAN 60HZ
 TANK DESIGNED FOR +7 PSIG

CONTAINS NO DETECTABLE LEVEL OF PCB (LESS THAN 2 PPM) AT THE TIME OF MANUFACTURE.

VOLTAGE POS AMPS

14400 1/A 100.22
 13800 2/B 104.56
 13200 3/C 109.36
 12470 4/D 115.74
 12000 5/E 120.25



9396435411035

HV AL

LV AL

SER. NO. BAR CODE CAT. NO. BAR CODE

SER. NO.

CNP02 = NP87 HV BUSHINGS
 CNP03 = HV CONNECTION
 CNP04 = NP90 HV WDG
 CNP05 = FUSES
 CNPKV = DY POS. KV.

CNP09 = NP115 TAP OR SM BOX
 CNP08 = NP8 LV PHASOR
 CNP10 = NP4 HV PHASOR
 CNP14 = NP177 NEUT PHASOR (VECTOR)
 CNP13 = NEUT WDG (COIL)
 CNP06 = LV CONNECTION
 CNP07 = NP88 LV WDG
 CNP11 = NP70 LV BUSHINGS
 CPRI1 = 0
 CPRI1E = 0
 CPRI1F = 0
 CPRI2A = 0
 CPHASH = GDY CPHASL = WYE

WDCOD = 01A10A

BLACK ANNODIZED ALUMINUM

REV	DATE	REVISION	BY	APP	

HOWARD INDUSTRIES INC.

LAUREL, MISS. USA 39440
 MFG. OF DISTRIBUTION TRANSFORMERS

NAME: LASER NAME PLATE		CC	857
DESCR: RF/TP/		Y-Y	
ID 3WMD7836	P.N. 0061830039.293		
SCALE 1.000	DWG BY WM	CHK BY JB	DATE 05/05/06

3WMD7836

CAT. NO. 9396435411035